



Cherner

The Cherner Chair Company

CHAIR SIDE CHAIR

The 1958 molded plywood side chair by Norman Cherner is the companion to the classic Cherner Arm Chair. The perfect dining chair, it is built to be handed down from generation to generation, available with upholstered pads. Reissued from the original drawings and molds, Cherner chairs are strong and lightweight.

Designed by Norman Cherner



Seat Pad Options:

Cherner seating products can be ordered with seat pads or seat and back pads. Pads are comprised of molded plywood forms padded with 3/4" of foam and wrapped with one of the following options: customer's own material (COM), Maharam Fabric, or Spinneybeck leather.

Seat pads must be installed at the factory and must be ordered at the same time as chairs or stools. Seat pads cannot be purchased separately or installed on previously purchased chairs.

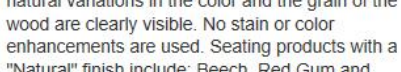


None Seat Only Seat & Back

Finishes:

Natural

"Natural" finishes have a clear top coat where the natural variations in the color and the grain of the wood are clearly visible. No stain or color enhancements are used. Seating products with a "Natural" finish include: Beech, Red Gum and Walnut.



Natural Walnut



Natural Beech



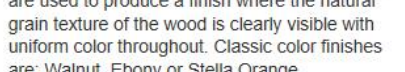
Natural Red Gum



Natural White Oak

Classic

Aniline dyes and water-based low VOC varnishes are used to produce a finish where the natural grain texture of the wood is clearly visible with uniform color throughout. Classic color finishes are: Walnut, Ebony or Stella Orange.



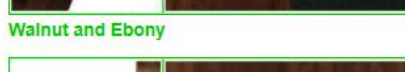
Walnut and Ebony



Classic Walnut



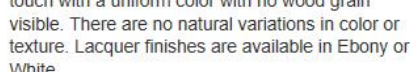
Classic Ebony



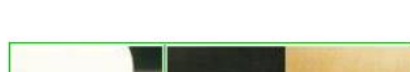
Stella Orange

Lacquer

Products with a lacquer finish are smooth to the touch with a uniform color with no wood grain visible. There are no natural variations in color or texture. Lacquer finishes are available in Ebony or White.



Ebony and Beech



Ebony Lacquer



White Lacquer

CHERNER SIDE CHAIR Wood Base

