



# Cherner

The Cherner Chair Company

## METAL BASE STOOL

Molded plywood Metal Base Stools are available in bar and counter heights. For home or hospitality environments. Available with or without upholstered pads. Metal Base Stools have a molded plywood shell of graduated thickness with a bright chrome base. Reissued from the original drawings and molds, the Cherner Metal Base Stools are strong, lightweight and like the originals, made in the U.S.A

Designed by Norman Cherner 1958



### Seat Pad Options:

Cherner seating products can be ordered with seat pads or seat and back pads. Pads are comprised of molded plywood forms padded with 3/4" of foam and wrapped with one of the following options: customer's own material (COM), Maharam Fabric, or Spinneybeck leather.

Seat pads must be installed at the factory and must be ordered at the same time as chairs or stools. Seat pads cannot be purchased separately or installed on previously purchased chairs.



None

Seat Only

Seat & Back

### Finishes:

#### Natural

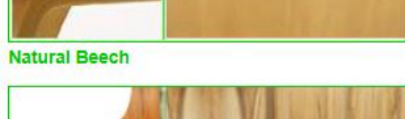
"Natural" finishes have a clear top coat where the natural variations in the color and the grain of the wood are clearly visible. No stain or color enhancements are used. Seating products with a "Natural" finish include: Beech, Red Gum and Walnut.



Natural Walnut



Natural Beech



Natural Red Gum



Natural White Oak

#### Classic

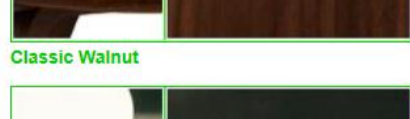
Aniline dyes and water-based low VOC varnishes are used to produce a finish where the natural grain texture of the wood is clearly visible with uniform color throughout. Classic color finishes are: Walnut, Ebony or Stella Orange.



Walnut and Ebony



Classic Walnut



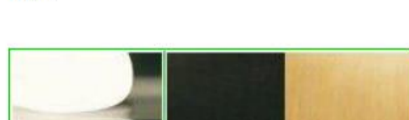
Classic Ebony



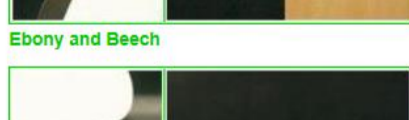
Stella Orange

#### Lacquer

Products with a lacquer finish are smooth to the touch with a uniform color with no wood grain visible. There are no natural variations in color or texture. Lacquer finishes are available in Ebony or White.



Ebony and Beech



Ebony Lacquer



White Lacquer

CHERNER STOOL/ COUNTER AND BAR HEIGHT Metal Base

