



Cherner
The Cherner Chair Company

OTTOMAN

The ottoman is the latest addition to the Cherner seating collection. This new design combines a molded plywood shell and laminated wood base which are combined to produce a dynamically comfortable and curvilinear form. A graceful addition to the home or office, the Cherner lounge is available in a variety of Cherner finishes and upholstery options. Available in Classic or Natural Walnut, Red Gum or Classic Ebony finishes. Cherner lounge chair and ottoman are "Made in the USA" from the highest quality sustainable domestic sources. "Made in the USA" from the highest quality sustainable domestic sources.

Design by Benjamin Cherner 2012



Seat Pad Options:

Cherner seating products can be ordered with seat pads or seat and back pads. Pads are comprised of molded plywood forms padded with 3/4" of foam and wrapped with one of the following options: customer's own material (COM), Maharam Fabric, or Spinneybeck leather.

Seat pads must be installed at the factory and must be ordered at the same time as chairs or stools. Seat pads cannot be purchased separately or installed on previously purchased chairs.



None

Seat Only

Finishes:

Natural

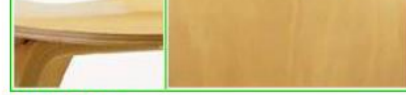
"Natural" finishes have a clear top coat where the natural variations in the color and the grain of the wood are clearly visible. No stain or color enhancements are used. Seating products with a "Natural" finish include: Beech, Red Gum and Walnut.



Natural Walnut



Natural Beech



Natural Red Gum



Natural White Oak

Classic

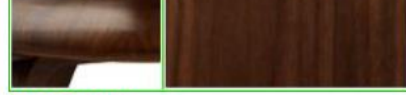
Aniline dyes and water-based low VOC varnishes are used to produce a finish where the natural grain texture of the wood is clearly visible with uniform color throughout. Classic color finishes are: Walnut, Ebony or Stella Orange.



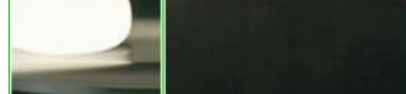
Walnut and Ebony



Classic Walnut



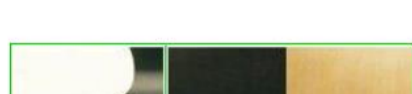
Classic Ebony



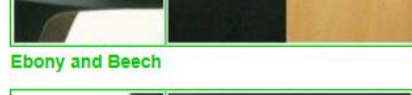
Stella Orange

Lacquer

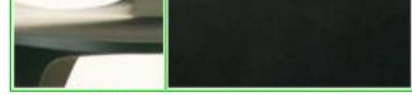
Products with a lacquer finish are smooth to the touch with a uniform color with no wood grain visible. There are no natural variations in color or texture. Lacquer finishes are available in Ebony or White.



Ebony and Beech

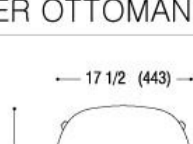


Ebony Lacquer

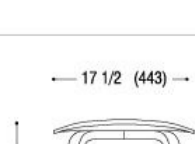


White Lacquer

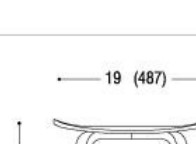
CHERNER OTTOMAN



Plan View



Side View



Front View