



Cherner
The Cherner Chair Company

TASK ARMCHAIR

For the home or office, the swivel base Task Chair is available with or without upholstered seat pads. With a uniquely designed chrome metal base, the Task Chair's seat height is adjustable from 16.5" to 19.5". The Task Chair utilizes the same molded plywood shell as Norman Cherner's iconic Arm and Side Chairs. Cherner Task Chairs are made in the U.S.A.

Designed by Norman Cherner 1958



Seat Pad Options:

Cherner seating products can be ordered with seat pads or seat and back pads. Pads are comprised of molded plywood forms padded with 3/4" of foam and wrapped with one of the following options: customer's own material (COM), Maharam Fabric, or Spinneybeck leather.

Seat pads must be installed at the factory and must be ordered at the same time as chairs or stools. Seat pads cannot be purchased separately or installed on previously purchased chairs.

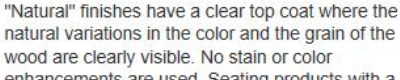


None Seat Only Seat & Back

FINISHES:

Natural

"Natural" finishes have a clear top coat where the natural variations in the color and the grain of the wood are clearly visible. No stain or color enhancements are used. Seating products with a "Natural" finish include: Beech, Red Gum and Walnut.



Natural Walnut



Natural Beech



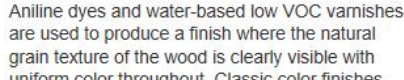
Natural Red Gum



Natural White Oak

Classic

Aniline dyes and water-based low VOC varnishes are used to produce a finish where the natural grain texture of the wood is clearly visible with uniform color throughout. Classic color finishes are: Walnut, Ebony or Stella Orange.



Classic Walnut



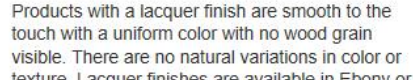
Classic Ebony



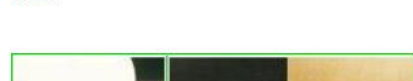
Stella Orange

Lacquer

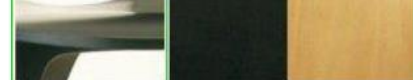
Products with a lacquer finish are smooth to the touch with a uniform color with no wood grain visible. There are no natural variations in color or texture. Lacquer finishes are available in Ebony or White.



Ebony and Beech



Ebony Lacquer



White Lacquer

CHERNER TASK CHAIR with Arms

